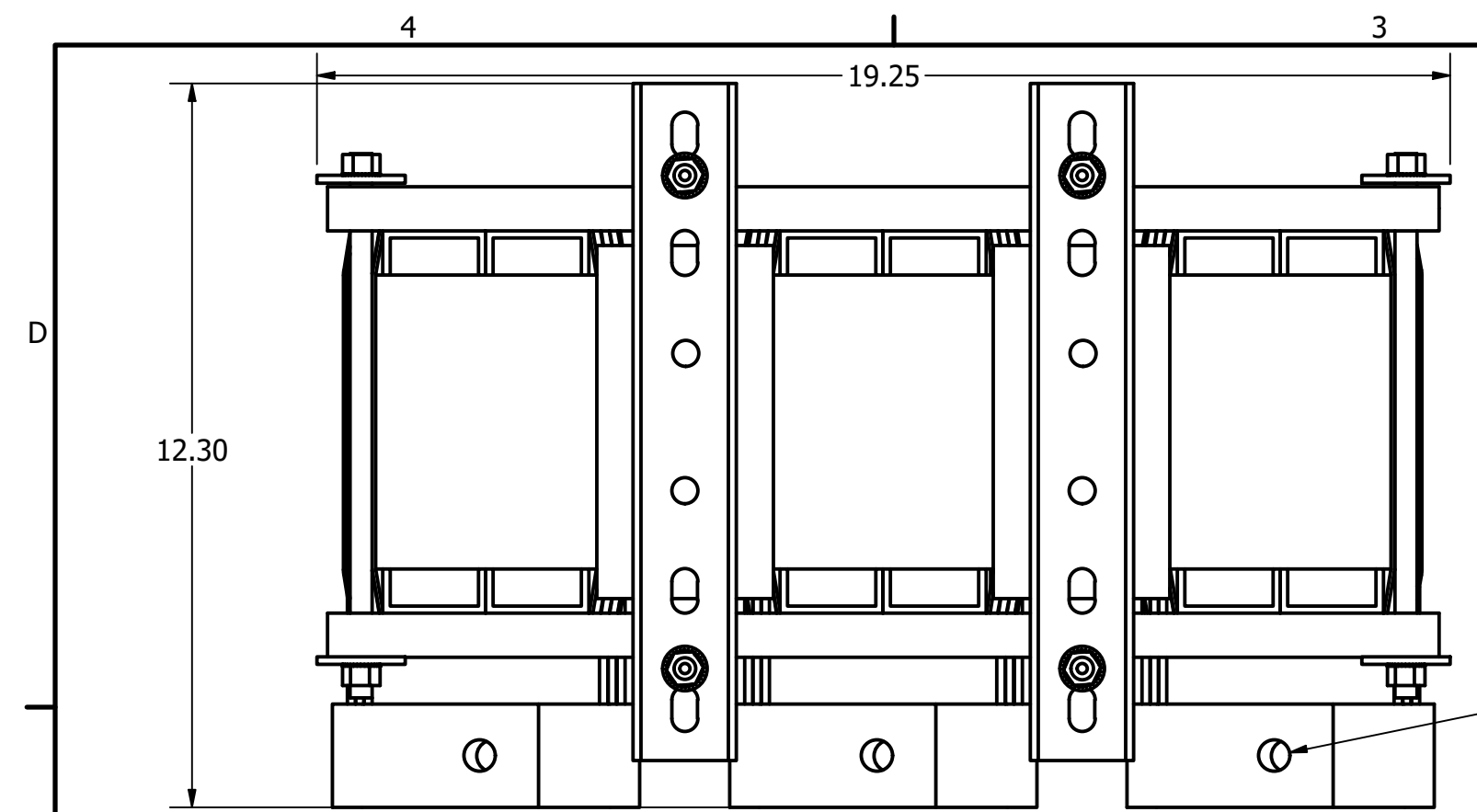
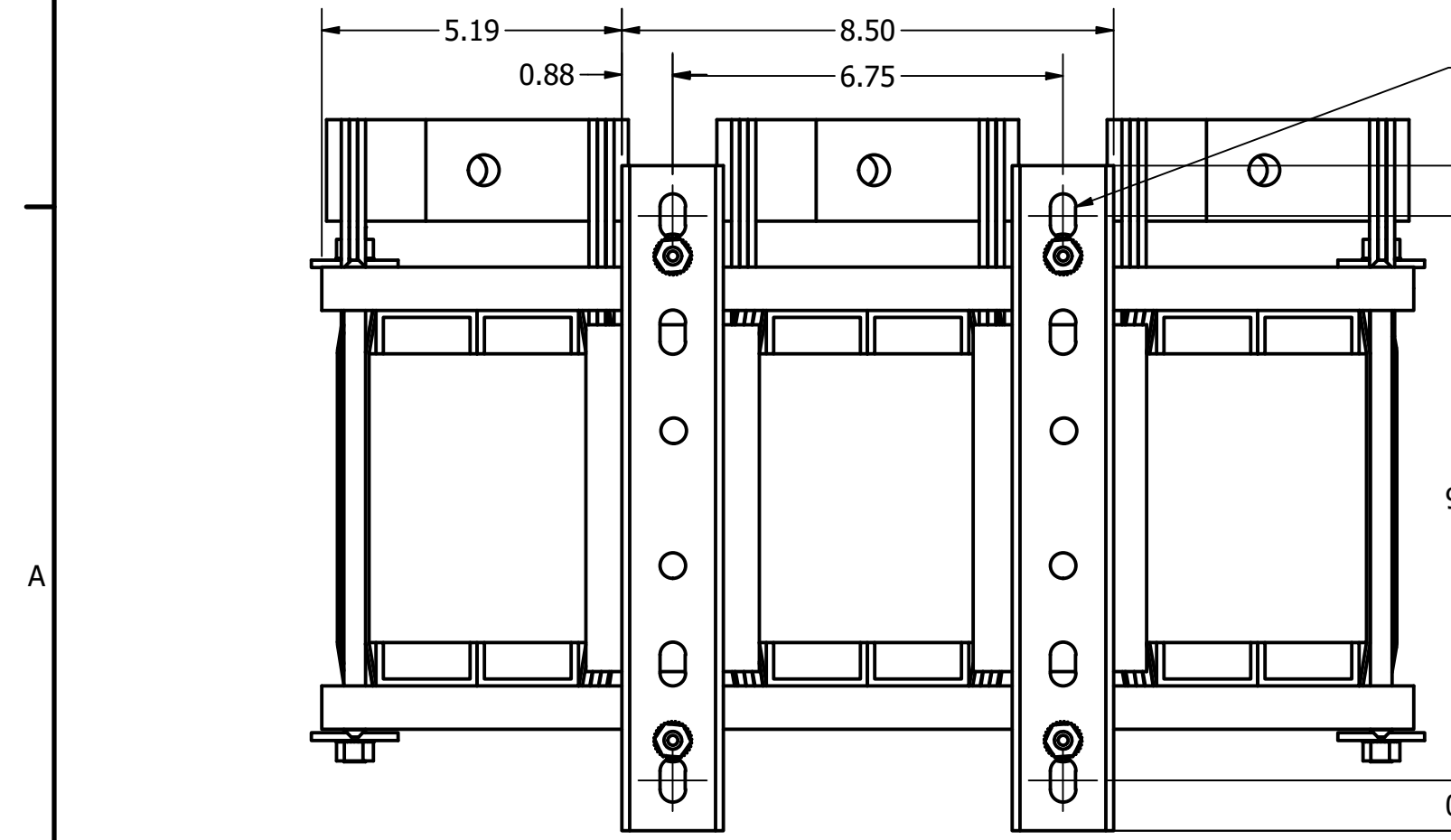
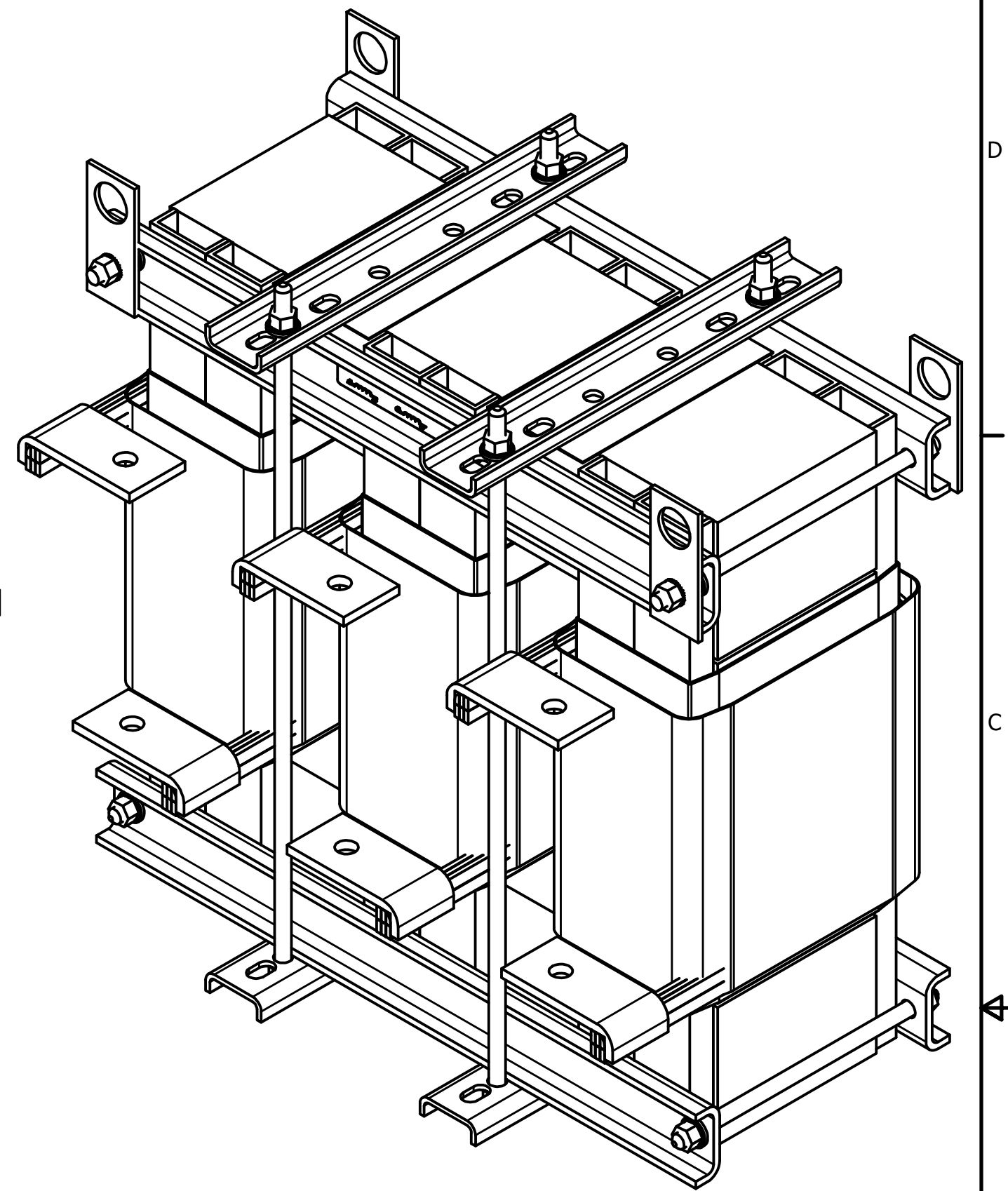
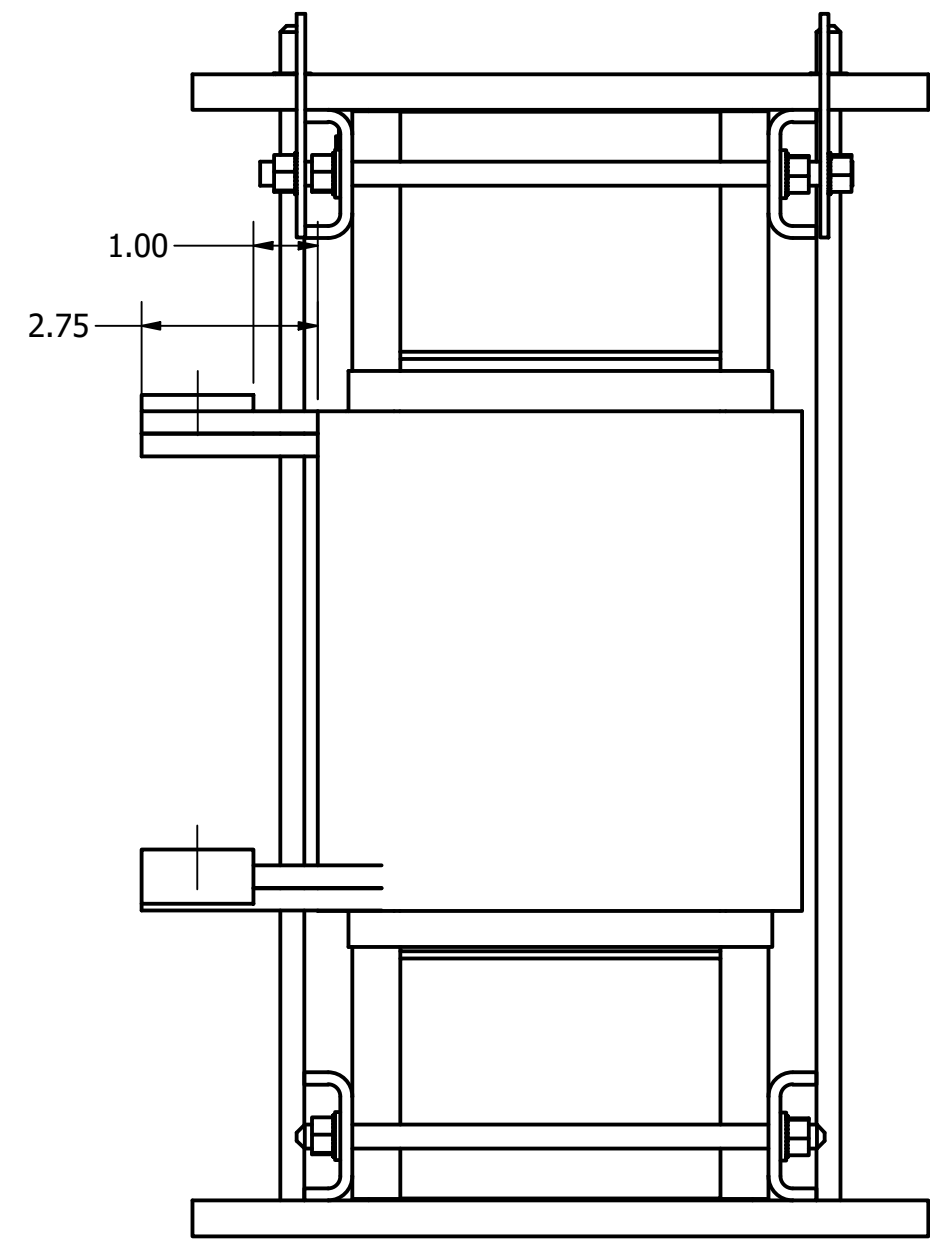
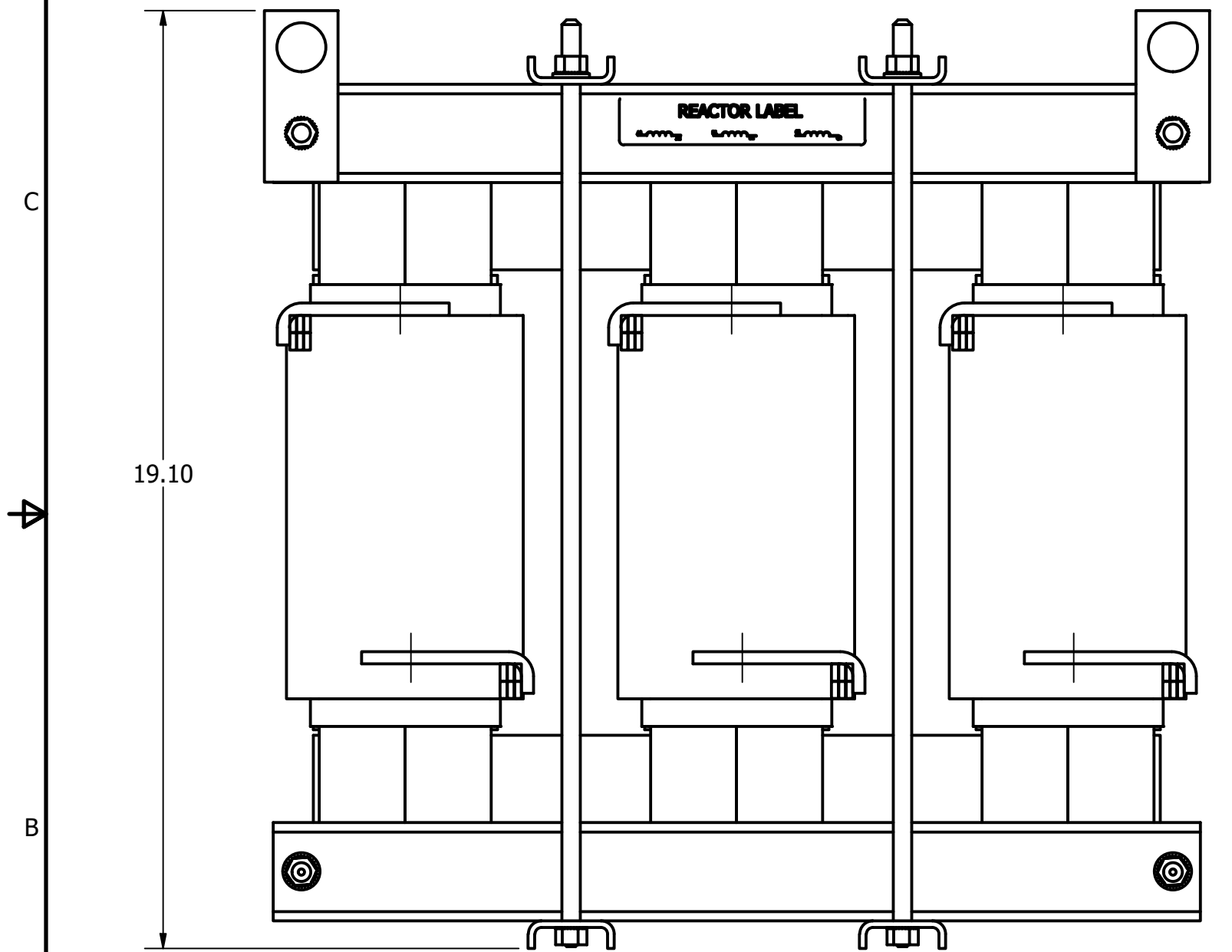


TCI Part Number	Rated Amps (A)	---mH +8%/-2%	Approx Weight (LBS)
KTR120A65HL	304	0.217	260



0.53 Dia Holes
6 Places.



0.44" Wide x 0.75" Long Slots
4 Places.

Material(s) Shall be RoHS Compliant

THE INFORMATION AND DESIGNS CONTAINED IN THIS DRAWING ARE CONFIDENTIAL AND THE PROPRIETARY PROPERTY OF ALLIED MOTION TECHNOLOGIES INC. AND ITS SUBSIDIARIES. NEITHER THIS DESIGN NOR ANY INFORMATION CONTAINED IN THIS DRAWING MAY BE REPRODUCED OR DISCLOSED TO OTHERS WITHOUT THE EXPRESS WRITTEN CONSENT OF ALLIED MOTION TECHNOLOGIES INC. AND ITS SUBSIDIARIES.

NO	REVISION	DATE	BY
A	As Designed	09/29/17	DSW

TOLERANCES (EXCEPT AS NOTED)	
DECIMAL	.XX ± .03 .XXX ± .010
FRACTIONAL	± 1/32
ANGULAR	± 1°

TCI
An Allied Motion Company

W132N10611 Grant Drive
Gemantown, WI 53022
© 2021 TCI, LLC

KTR120A65HL Tuning Reactor (800HP)
304 Amps, 480V

DRN BY: DSW	DATE: 09/29/17	107323DG
SCALE:	APRVD:	SIZE: C

SHT. 1 OF 1